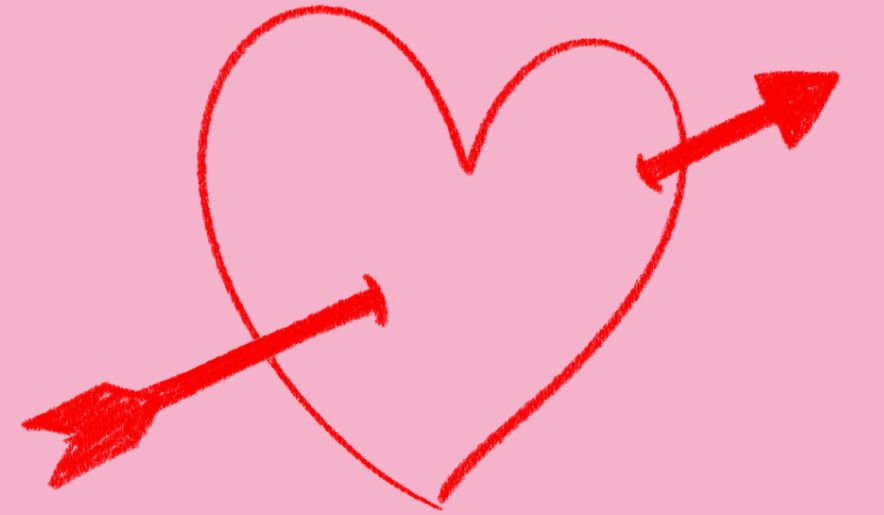
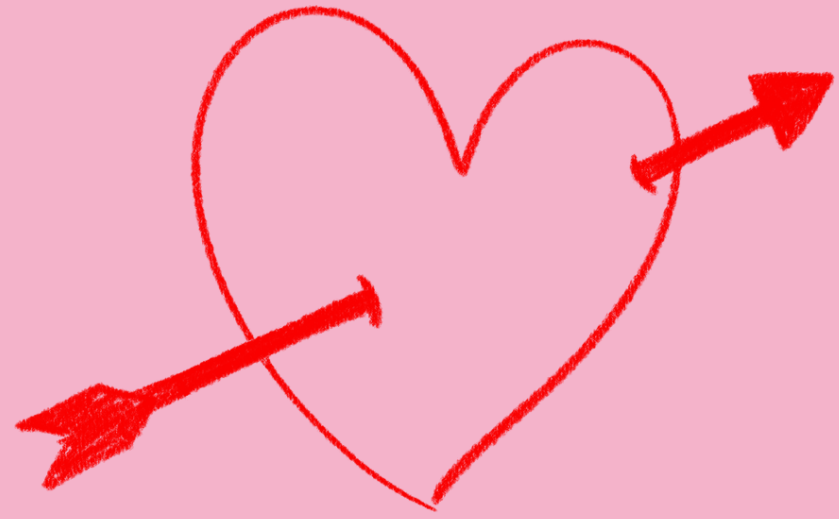




Henry VIII
1509-1547

6 wives







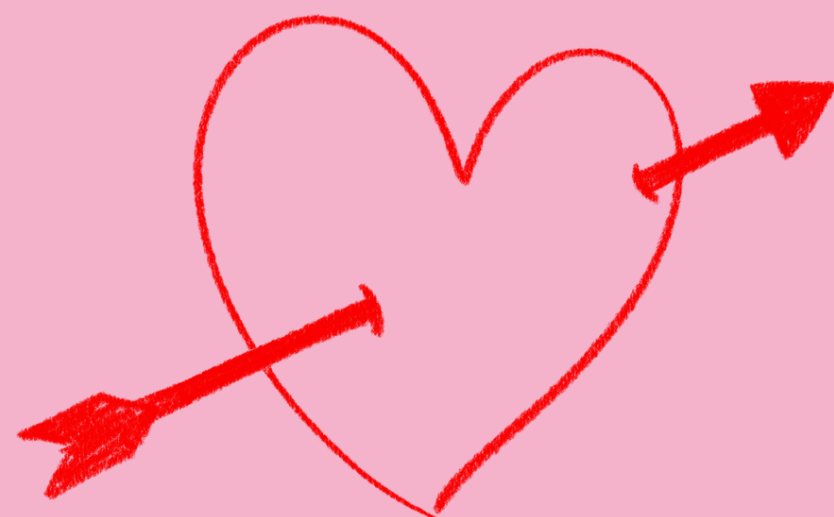
BIRTH : 1491

1509 : KING AT 17 / MARRIED CATHERINE OF ARAGON



1527 : WANTED A DIVORCE BUT THE POPE REFUSED





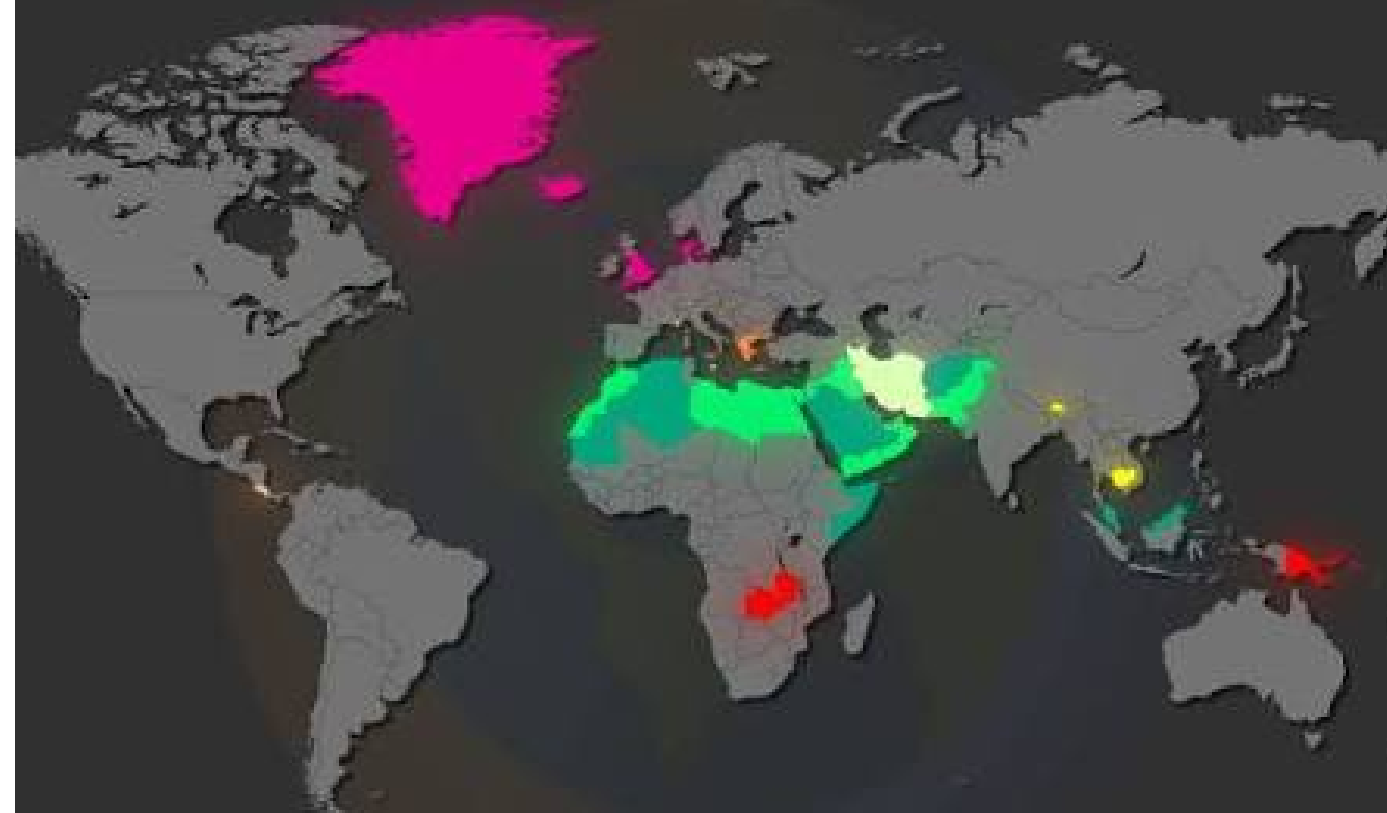


Henry broke away from the Catholic Church and established the Church of England largely because he wanted control over religious affairs and to secure a divorce.



"One lasting impact of Henry VIII's reign is that the British monarch is still the Supreme Governor of the Church of England. Although the United Kingdom is now a democratic society with freedom of religion, the monarchy and the state church remain connected, demonstrating how Henry VIII's decisions continue to shape modern Britain."

COUNTRIES WITH STATE RELIGION



- | | |
|------------------------------|------------------------|
| ● PROTESTANTISM | ● SUNNI ISLAM |
| ● CHRISTIANITY (UNSPECIFIED) | ● ISLAM (UNSPECIFIED) |
| ● EASTERN ORTHODOX CHURCH | ● SHIA ISLAM (TWELVER) |
| ● CATHOLIC CHURCH | ● BUDDHISM |



The British monarch is the Supreme Governor of the Church of England. Bishops from the Church of England sit in the House of Lords, giving the Church a formal role in Parliament.

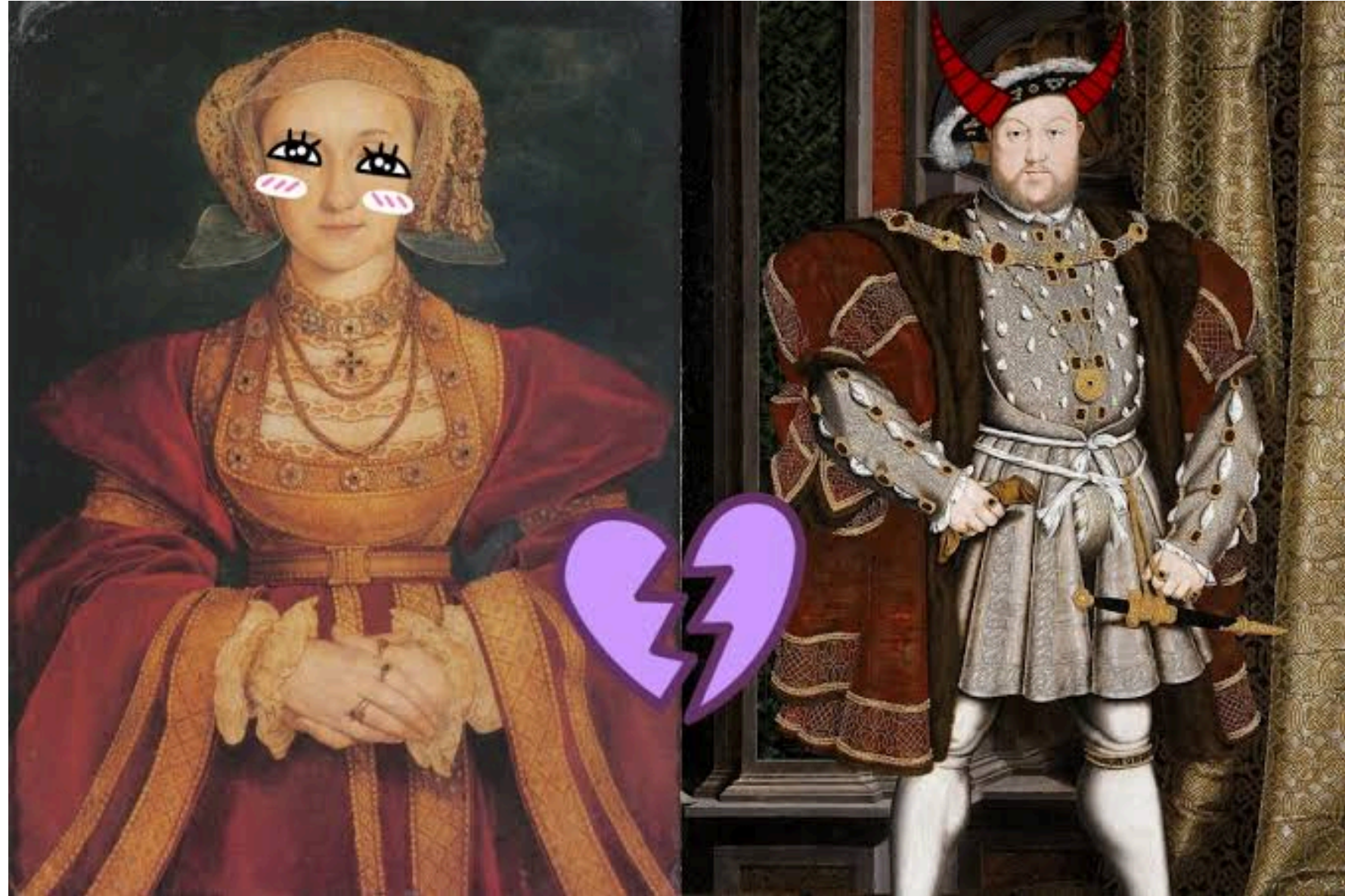
This arrangement is a direct legacy of Henry VIII establishing the Church of England.



- Vatican City is both a country and the headquarters of the Catholic Church.
- The Pope is both the religious leader and the head of state.



Jane Seymour



Anne of Cleves



Catherine Howard



**CATHERINE PARR
OUTLIVED HENRY VIII**







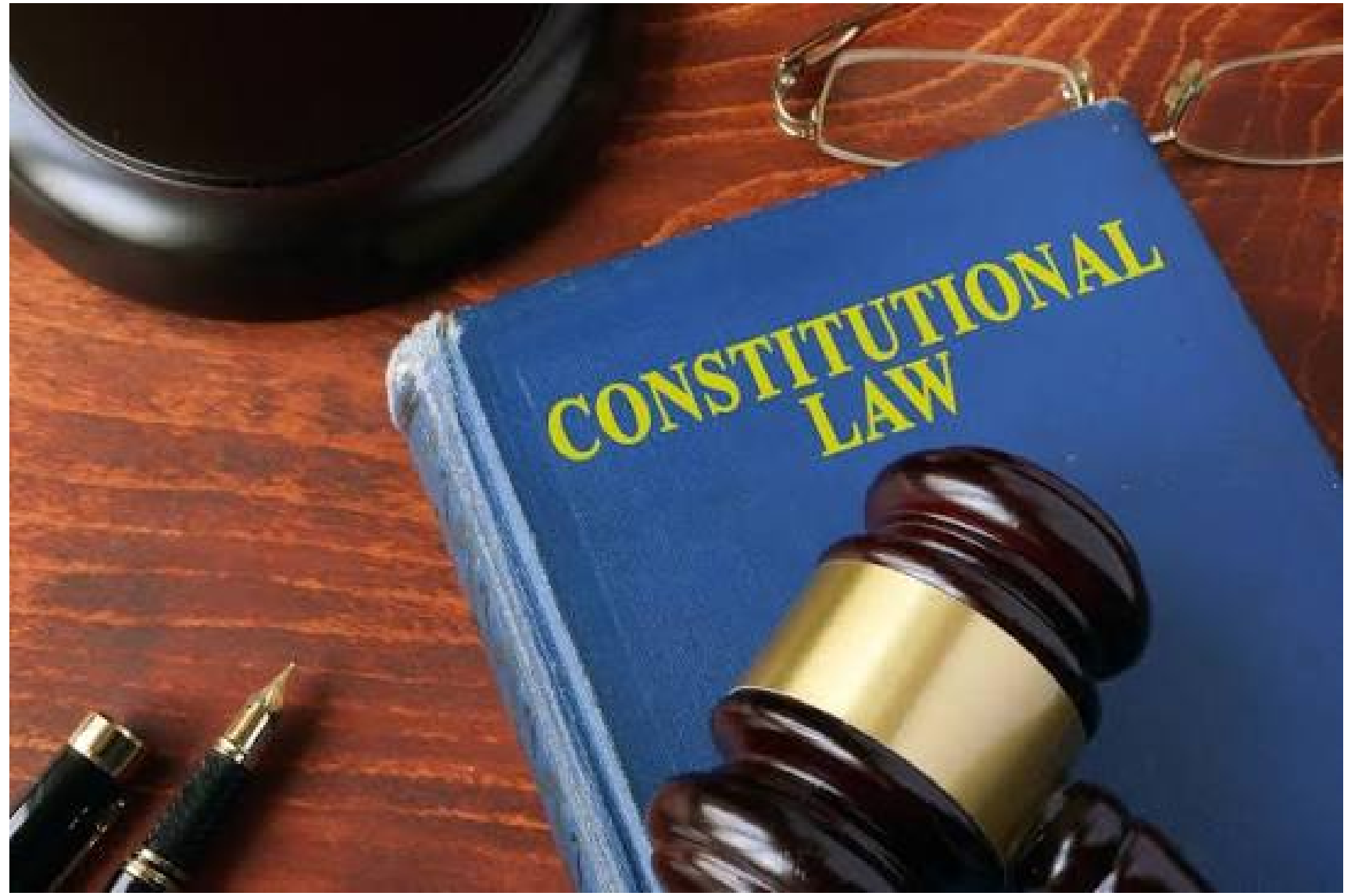




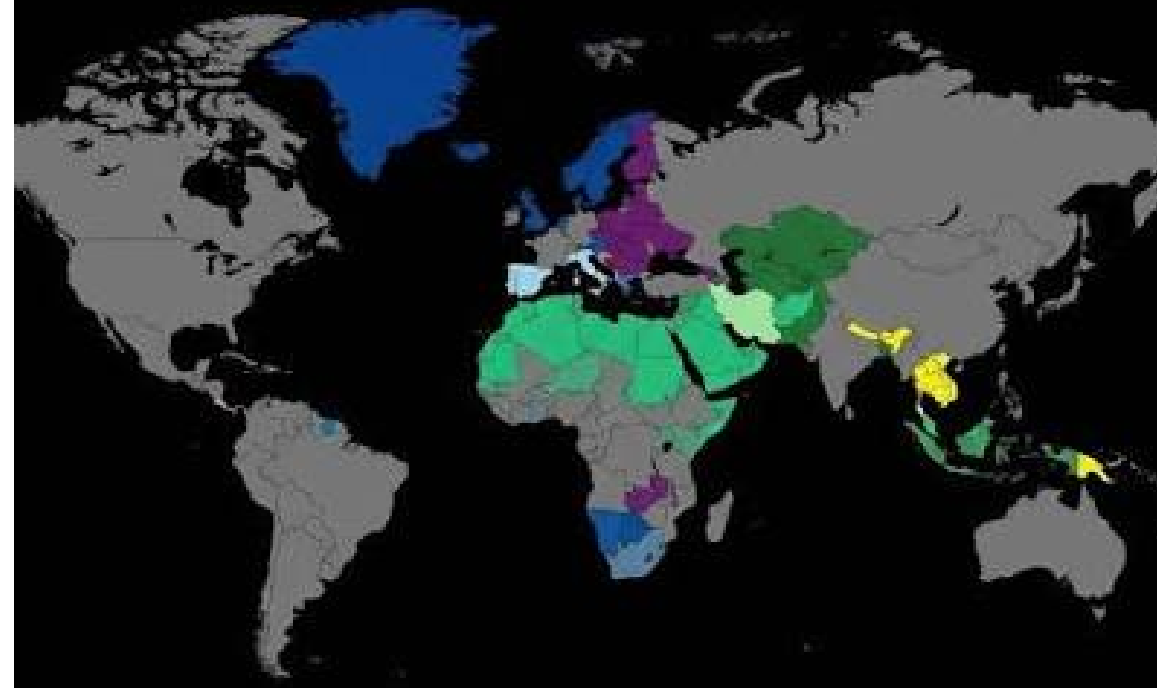


Death in 1547, aged 55





COUNTRIES WITH STATE RELIGION



- | | |
|------------------------------|------------------------|
| ● PROTESTANTISM | ● SUNNI ISLAM |
| ● EASTERN ORTHODOX CHURCH | ● SHIA ISLAM (TWELVER) |
| ● CATHOLIC CHURCH | ● ISLAM (UNSPECIFIED) |
| ● CHRISTIANITY (UNSPECIFIED) | ● BUDDHISM |

THE TOP TEN MEDICAL ADVANCES THROUGHOUT HISTORY



LOVE MARRIAGE VS ARRANGED MARRIAGE



LOVE MARRIAGE



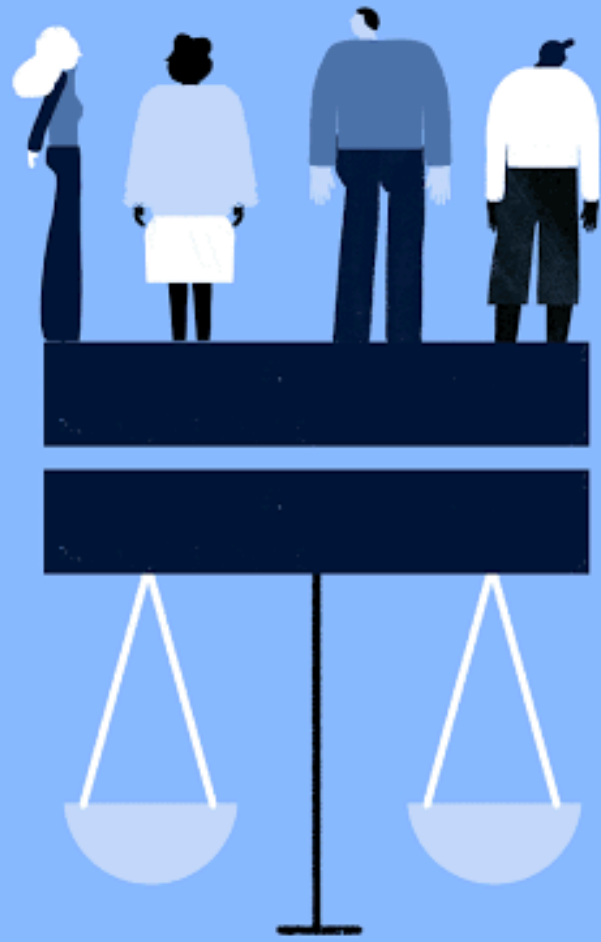
ARRANGED MARRIAGE

Begins with emotional bond	Begins with family involvement
Built over time before marriage	Grows after marriage
Often less involved at the start	Parents play a key role from the beginning
Based on personal choice	Based on family values and compatibility
High – partners choose each other	Limited – families usually shortlist the match
Usually longer before marriage	Often shorter, but with post-marriage growth
Acceptance by families	Building emotional connection
Trust, mutual respect, love	Patience, compromise, family support

WOMEN AND GIRLS NEED EQUAL ACCESS TO:

- ✓ quality education
- ✓ job opportunities
- ✓ economic resources
- ✓ political participation





Due Process

[ˈdju ˈprɑːses]

A requirement that legal matters be resolved according to established rules and principles and that individuals be treated fairly.